

## RFIQ™ System Security at its Best

**I**Team's revolutionary RFIQ™ System provides perimeter based library material protection while providing a migration path to full RFID capability.

RFIQ™ improves alarm handling capability for libraries by **eliminating** false alarms and using the library's ILS system to activate/deactivate security.

RFIQ replaces traditional EM or RF security systems and has no metal and electronic interference issues.

The RFIQ™ antenna system will provide an obvious theft deterrent with an aesthetically pleasing "see-thru" design.

### Features:

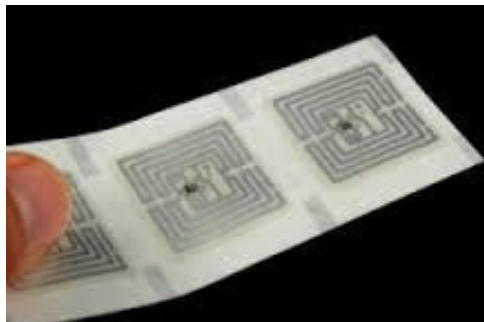
- Works with complete range of iTeam/D-Tech 13.56 MHz RFIQ™ labels.
- Only 3 Components (Gates, Tags, Reader pad)
- Gates Available in Steel or lit Plexi-glass.
- iTeam's advanced digital radio frequency smart technology uses state of the art digitally enhanced "receiver to chip" technology to ensure superior detection with **false alarm-free** protection
- Integrated alarm lights and alarms provide individual aisle identification.
- Integrated lights illuminate system for visual notification and to indicate system is on and working
- **Easy to install and operate!**  
Antennas mount as a "free standing" unit bolted to the floor, with deactivation pad located on top or fixed under circ desk counter top



# RFIQ™ System Security at its Best

## Specifications:

### Hardware:



	Antenna	Reader 1 watt	Reader 4 watt	Multiplexer MUX	Light option regulator
<b>Height</b>	69" (1750mm)	7.25" (184mm)	13" (330mm)	3.5" (89mm)	3.75" (95mm)
<b>Width</b>	4.3" (109mm)	4.3" (109mm)	7.1" (180mm)	4.3" (109mm)	4.3" (109mm)
<b>Length</b>	19.5" (495mm)	10.6" (269mm)	4.7" (119mm)	7.2" (183mm)	7.1" (180mm)
<b>Weight</b>	50lbs.	3lbs.	5 lbs.	2 lbs.	3.75 lbs.



### Material:

Frame: transparent acrylic panel  
Lower base: Stainless Steel

### Power Supply:

110 V ac, 15 amps

### Electronics:

PR101/TS400, light regulator and power unit, multiplexer for multiple aisle configurations.

### System Entrance Coverage

2 Security Gates = 3ft. - 5.5 ft.

3 Security Gates = 6ft. – 10ft.

Mount no closer than 18 inches from door frame recommended.

### Power Supply

One outlet per electronics – dedicated, grounded power required.

One per light unit-same as above, adjacent to above unit, 15 amp fused outlet.

### AFI

Recommended AFI mode supported for future migration to RFID.

### Location

The system location and layout is to be detailed and agreed upon by ITeam and customer. Can be mounted close to doors and entrance/exits. ADA accessible.

### Detection width

RFIQ security gates are transceivers, two antennas can cover a 3 to 6 foot Entrance and detect to either side 2.5 ft.



**NO MAGNETS – NO CARDS – NO HASSELS = RFIQ**